

Cultural Heritage: An inclusive Path for participation and exchange in Europe



Romania



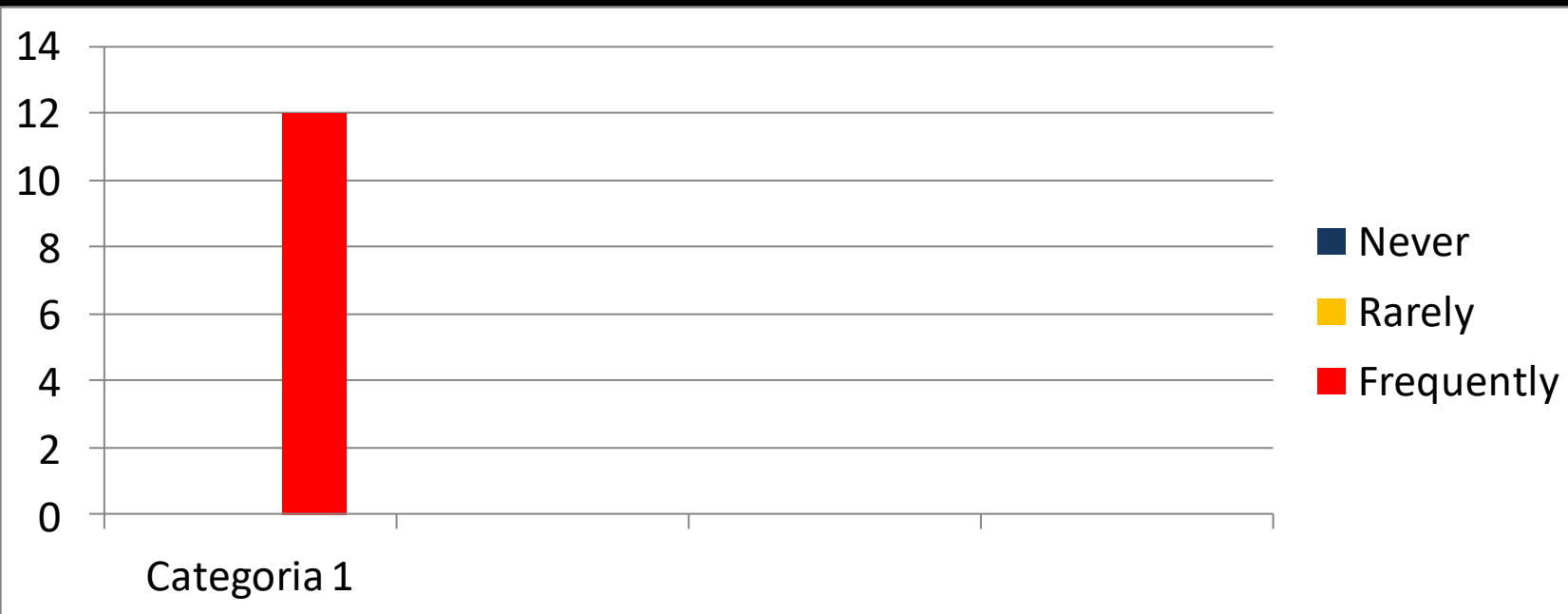
Teachers' questionnaire



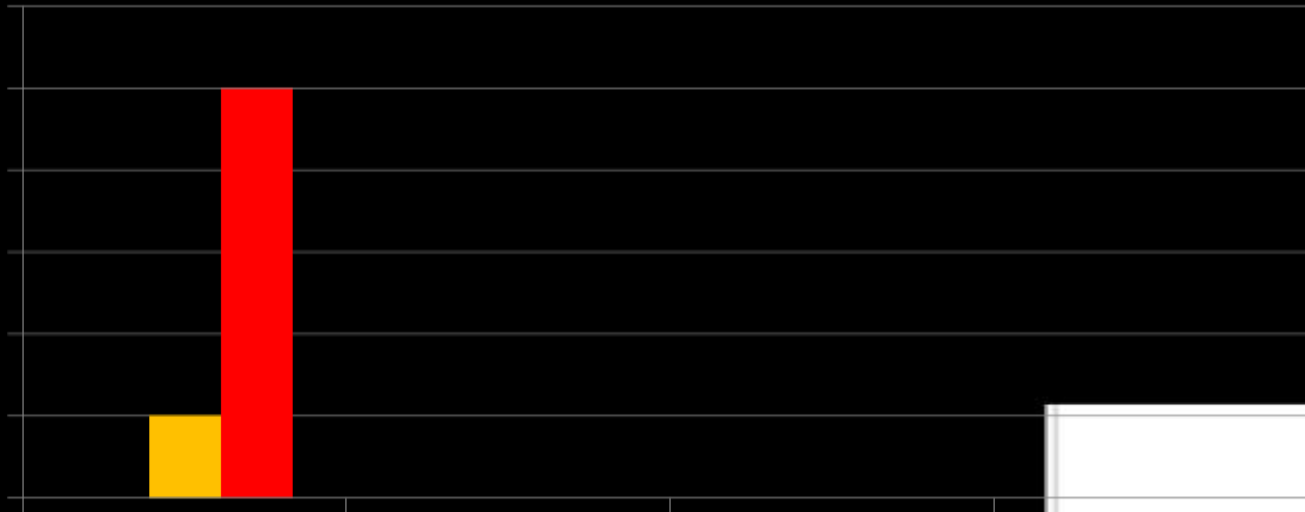
- **10 teachers completed the questionnaire.**
- **Their answers are:**



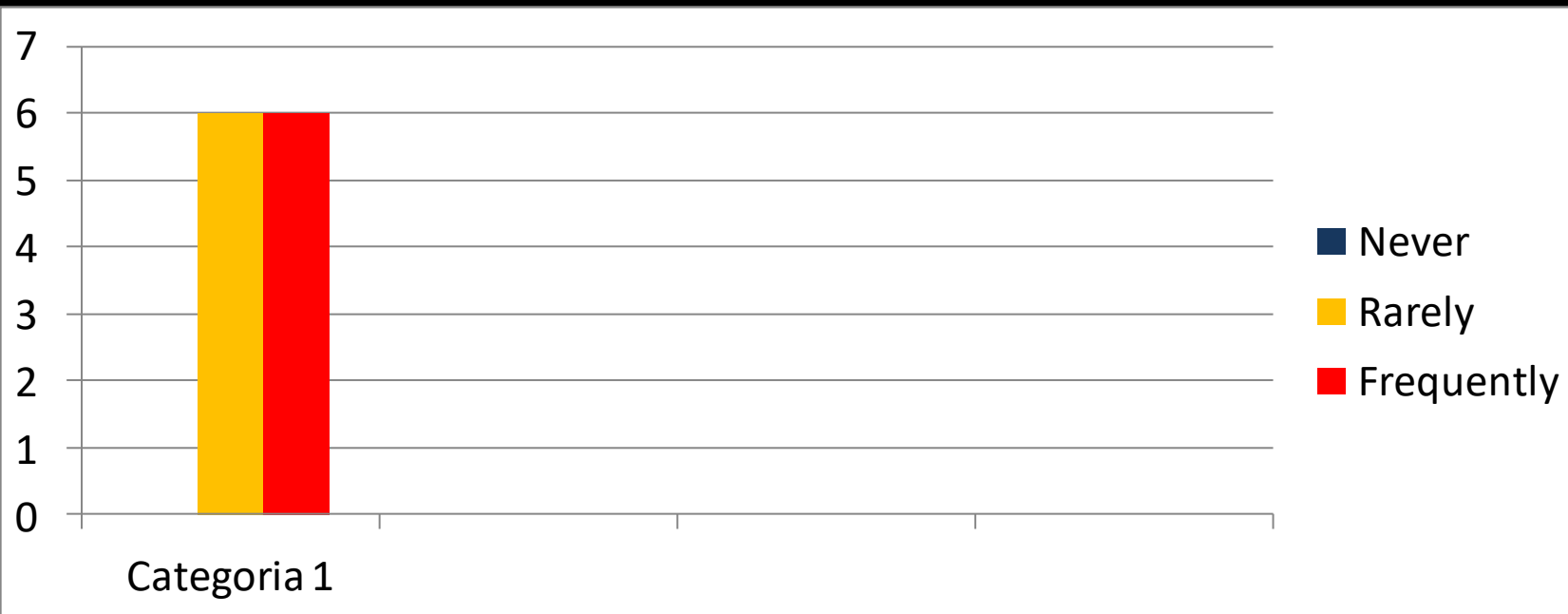
1. The curriculum is enriched with cultural heritage themes.



2. I often visit with my students festivals or other cultural events.



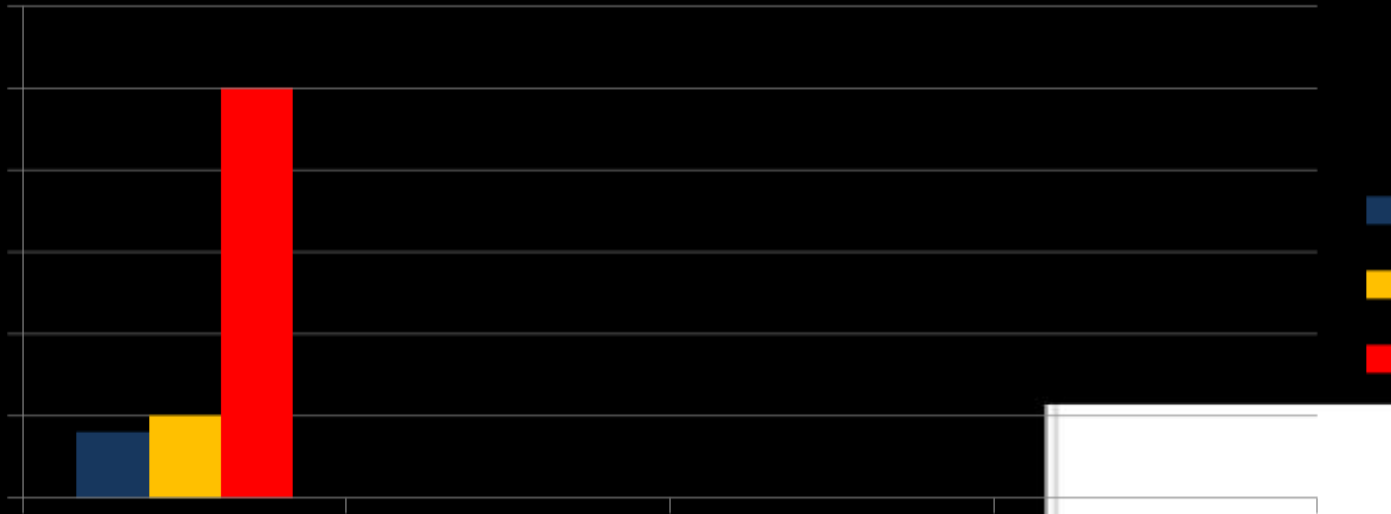
3. I often visit with my students various sites and museums.



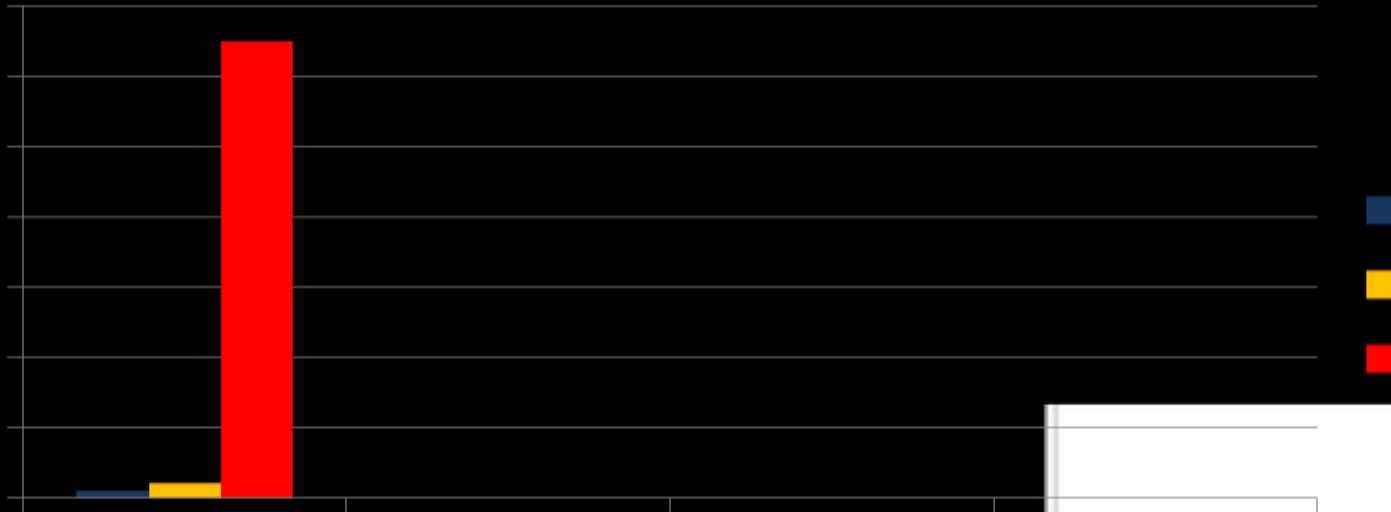
4. The use of new technologies may improve the students' conduct with various aspects of the cultural heritage.



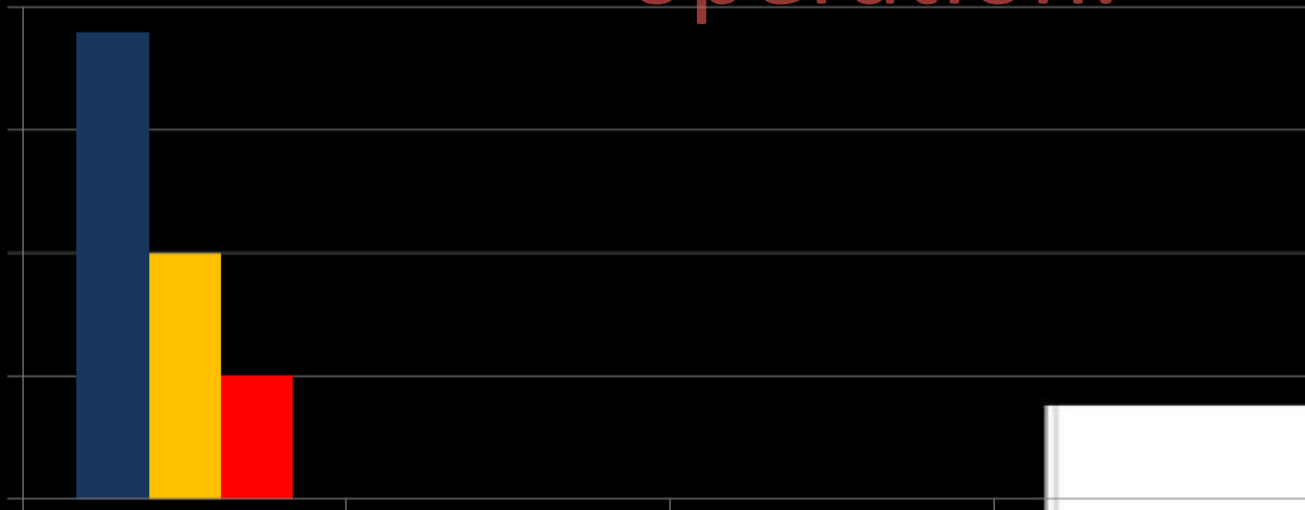
5. All the students of the school have equal opportunities to participate in school events.



6. The parents of non-native speakers students, participate in school events.



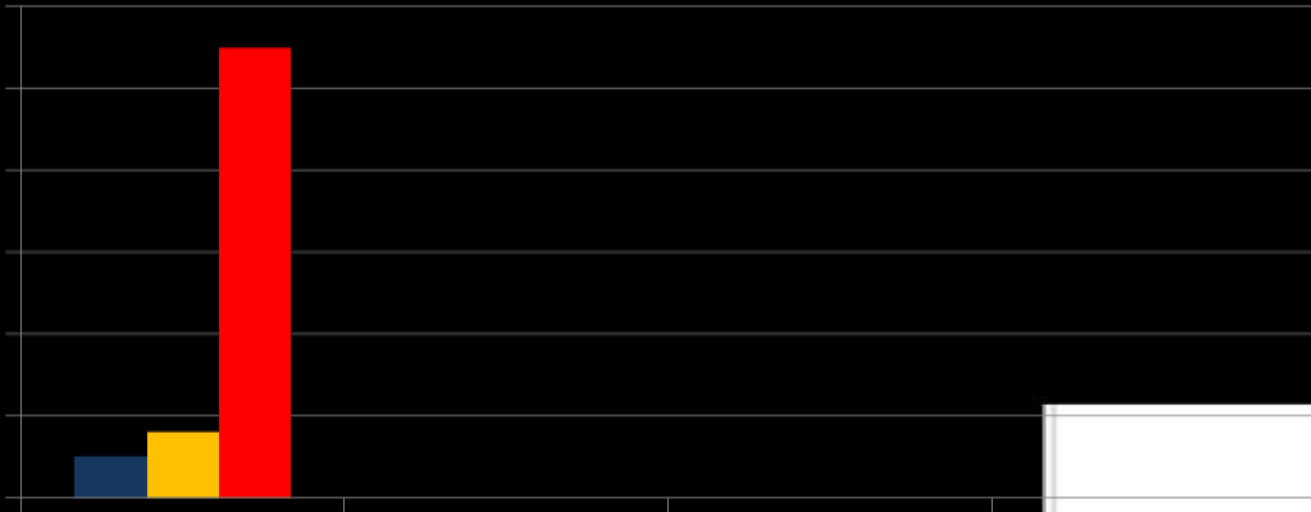
7. The students of my school often take responsibilities relating to school operation.



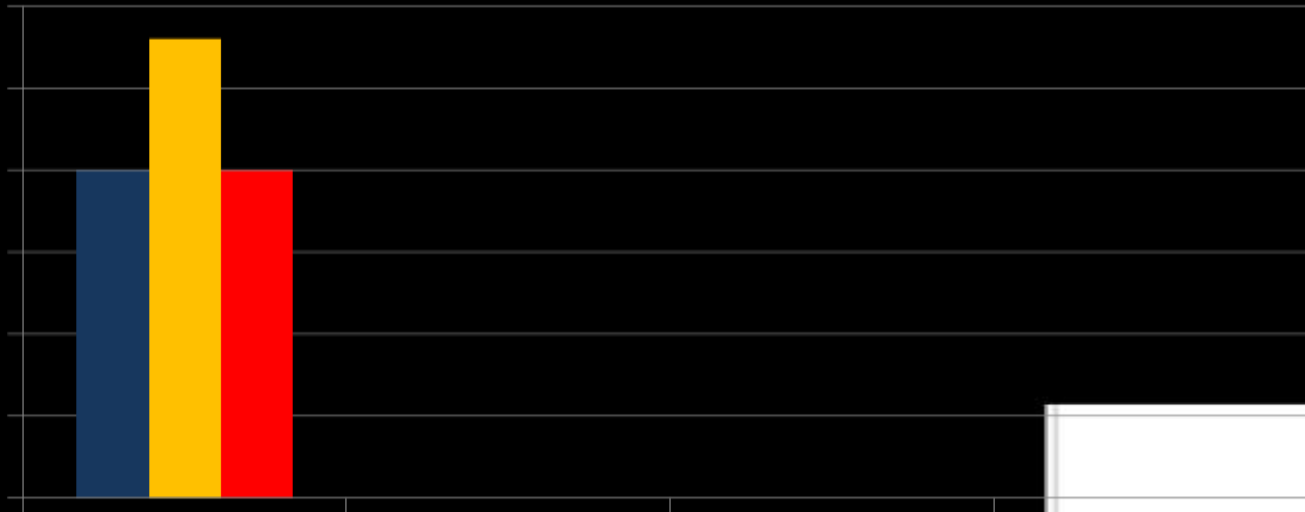
8. My students work I teams during instruction.



9. The school announcements are often translated to other languages.



10. I believe an important hurdle that non-native speakers face, is the learning of the native language.



11. I feel comfortable to teach subjects relating to worldwide cultural heritage.

